

# NewStatesman

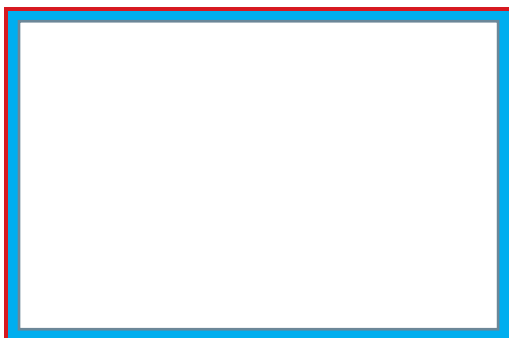
## PRINT SPECIFICATIONS

All dimension width x depth (mm)

### STANDARD

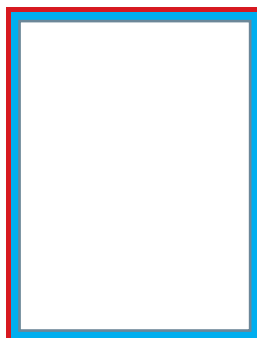
#### DOUBLE-PAGE SPREAD

- Trim: 420x276
- Bleed: 426x282 (+3 from each edge)
- Text-safe margin: 410x260 (-8 from each edge)



#### FULL PAGE

- Trim: 210x276
- Bleed: 216x282 (+3 from each edge)
- Text-safe margin: 194x260 (-8 from each edge)

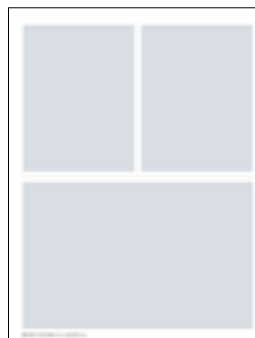


#### 1/2 PAGE

188x120

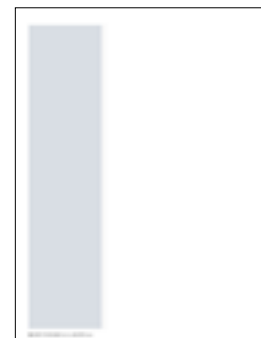
#### 1/4 PAGE

91x120



#### 1/3 PAGE

60x248



### CLASSIFIED

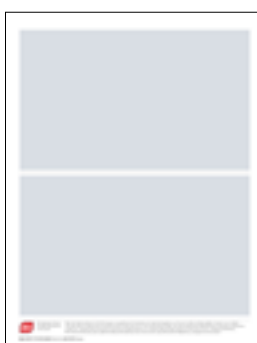
#### FULL PAGE

188x234



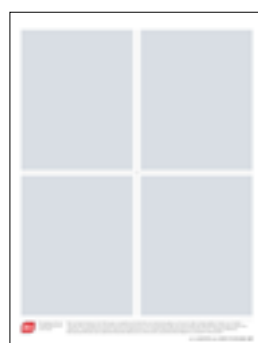
#### 1/2 PAGE

188x115



#### 1/4 PAGE

91x115



#### REQUIREMENTS

- Artwork must be supplied as a high resolution PDF, or packaged idml (fonts included)
- Fonts and images must be embedded
- Image must be at a

minimum of 300dpi  
CMYK colours only

#### PRESETS

- Pass4Pressv10
- PSO\_LWC\_Standard\_bas. ICC (3,1 MB) [download](#)

#### ADVERTISERS PLEASE NOTE

- To guarantee colour repro adverts need to be supplied with a colour proof for colour matching purposes

#### CONTACT

Emily Black

[emily.black@newstatesman.co.uk](mailto:emily.black@newstatesman.co.uk)